

TANGO ST SOLO 121, Steamair



Ref602745 (SOLOST121SAUL)

Super Automatic Espresso Machine

- 1 Group
- 2 Grinders
- Cappuccinator - Steamair - Mitigated Hot Water
- 208-240V 1N 60~Hz
- UL/NSF Certified
- Inox

General Features

The Tango® ST delivers exceptional coffee quality with the patented Tango® Dual Infusion Chamber, engineered for high performance and precision. Ideal for busy environments like cafes, bars, and hospitality venues, this super-automatic machine offer unparalleled reliability and consistency, creating outstanding espresso every time. With intuitive controls and robust features, the Tango® ST makes exceptional coffee accessible for both barista and self-service settings.

TANGO ST SOLO 121, Steamair

Main Features

- Auto cleaning program.
- 1 group full-automatic machine.
- 6.5 liter steam/coffee boiler.
- The super automatic coffee machine Tango® ST Solo takes up a 7" color touch screen user interface to control intuitively the TANGO® group head recognized for its exceptional coffee extraction quality. It aims to automatically transform coffee and fresh milk into a variety of espresso beverages.
- The machine is able to create and compose a choice of 48 drinks menu and delivers 2 drinks simultaneously operating water and steam: it impresses its users with an exceptional result in every cup, and the quality of its equipment makes it a highly reliable choice for demanding professional use.
- 1 x Tango Cappuccinatore device with double feature L: for hot milk and C: for foam by air injection.
- Programmable water and steam.
- Delivery Capacity: Espresso 40ml: 270 cups/h Lungo 100ml: 180 cups/h Hot Water: 36 L/h Cappuccino 100ml: 240 cups/h Latte 100ml: 180 cups/h
- To obtain milk based beverages, the side milk refrigerator is needed.
- Steamair milk auto-frother programmable outlet.

Construction

- PID (proportional-integral-derivative) Temperature control: a precise controller algorithm system that gives consistency and accuracy to brewing temperature management system.
- 2 coffee grinders (1 x 1,7 kg & 1 x 1,2 kg coffee hoppers).
- LCD Touchscreen.
- LED lights on body.

Optional Accessories

- KIT OF RAISED 3" FEET PNC 871041 ☐

TANGO ST SOLO 121, Steamair

Electric

Supply voltage: 208-240 V/1 ph/60 Hz

Electrical power, max: 5.5 kW

Plug type:

Water:

Cold water temperature
(min/max): 5 / 60 °C

Key Information:

External dimensions,
Height: 29 5/8" (833 mm)

External dimensions,
Weight: 216 lbs (102 kg)

Net weight: 216 lbs (102 kg)

Shipping width: (1100 mm)

Shipping depth: (750 mm)

Shipping height: (840 mm)

Shipping weight: lbs (119 kg)

Shipping volume: 0.7 m³

Certifications



The company reserves the right to make modifications to the products without prior notice. All information correct at time of printing.

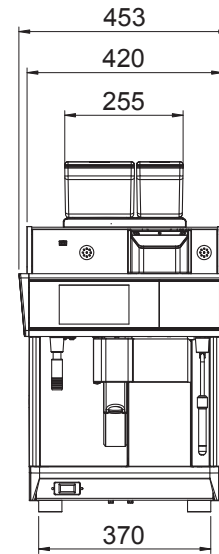
2025.04.02

Part of

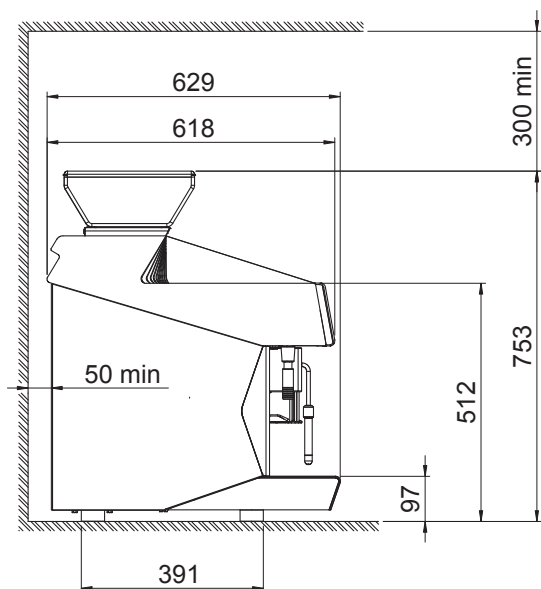


Electrolux
Professional
Group

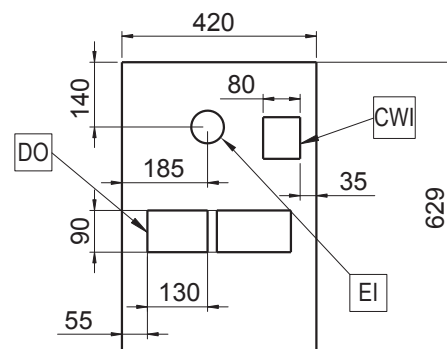
Front



Side



Top



UNIC